



FLOOR POLISHER WASHER 10 INCH ITEM#92030



OWNER'S MANUAL AND SAFETY INSTRUCTIONS

SAVE THIS MANUAL. KEEP THIS MANUAL FOR SAFETY WARNINGS, PRECAUTIONS, ASSEMBLY, OPERATION, INSPECTION, MAINTENANCE AND CLEANING PROCEDURES. WRITE THE PRODUCT'S SERIAL NUMBER ON THE BACK OF THE MANUAL, OR THE MONTH AND YEAR OF PURCHASE IF PRODUCT HAS NO SERIAL NUMBER

FOR QUESTIONS, PLEASE CALL CUSTOMER SERVICE: 909.628.0880



GENERAL SAFETY WARNINGS

Read all safety warnings and instructions. Failure to follow the warnings and instructions may result in electric shock, fire and/or serious injury. Save all warnings and instructions for future reference.

- Keep area well lit. Cluttered or dark areas invite accidents.
- **DO NOT** operate power tools in an explosive atmosphere, such as in the presence of flammable liquids, gases or dust. Power tools create sparks which may ignite dust or fumes.
- This appliance is not intended for use by persons, including children with reduced sensory or mental capabilities or lack of experience or knowledge.
- Keep children and bystanders away while operating the power tool. Distractions can cause the user to lose control.

ELECTRICAL SAFETY

- Power tool plugs must match the power outlet. Never modify the plug on this power tool in any way.
- **DO NOT** use any adapter plugs with earthed (grounded) power tools. Unmodified plugs and matching outlets will reduce the risk of electric shock.
- Always use an approved extension lead suitable for the power input for this tool. Before use, inspect the extension lead for signs of damage, wear or aging. Replace the extension lead if damaged or defective.
- Power tool plugs must match the outlet. Never modify the plug in any way. **DO NOT** use any adapter plugs with grounded power tools. Unmodified plugs and matching outlets will reduce risk of electric shock.
- Avoid body contact with grounded surfaces such as pipes, radiators, ranges and refrigerators. There is an increased risk of electric shock if your body is grounded.
- **DO NOT** expose power tools to rain or wet conditions. Water entering a power tool will increase the risk of electric shock.
- **DO NOT** abuse the cord. Never use the cord for carrying, pulling or unplugging the power tool. Keep cord away from heat, oil, sharp edges or moving parts. Damaged or entangled cords increase the risk of electric shock.
- When operating a power tool outdoors, use an extension cord suitable for outdoor use. Use of a cord suitable for outdoor use reduces the risk of electric shock.
- If operating a power tool in a damp location is unavoidable, use a Ground Fault circuit interrupter (GFCI) protected supply. Use of a GFCI reduces the risk of electric shock.
- Stay alert, watch what you are doing and use common sense when operating a power tool. **DO NOT** use a power tool while you are tired or under the influence of drugs, alcohol or medication. A moment of inattention while operating power tools may result in serious personal injury.
- Use personal protective equipment. Always wear eye protection. Safety equipment such as dust mask, non-skid safety shoes, hard hat, or hearing protection used for appropriate conditions will reduce personal injuries.
- **DO NOT** force the power tool. Use the correct power tool for the application.
- **DO NOT** use the power tool if the power switch does not turn on or off.
- Disconnect the plug from the power source and/or the battery pack from the power tool before making any adjustments, changing accessories or storing power tools.

SAFETY INFORMATION

- If the tool or charger is damaged in any way.
- If the battery is not charged within the time frame as specified in this manual, turn the charger off.
- Use the battery charger indoors only.
- Do not place the tool or charger on an uneven surface as a fall may cause serious damage.
- Do not operate the charger in a cabinet or other enclosure unless proper ventilation is provided.
- Never place the tool or charger near or over a heat source such as radiator or heater.
- Do not charge batteries or use the tool and battery in locations where the temperature may be below 0°C, or above 40°C such as inside sheds or metal structures.
- The battery can be charged or operated at temperatures between 0°C and 40°C.

WARNING: Never charge your Lithium-ion battery below or above temperatures recommended as this may result in fire or serious damage to the battery.

- The most suitable temperatures to charge the battery are between 20°C and 25°C.
- Do not place any object onto the charger or allow any object to rest on the charger.
- Make sure that the charger cable is positioned where it will not be stepped on, tripped over or otherwise subjected to damage or stress. Keep the lead away from operating machinery.
- Do not use an extension cord unless absolutely necessary. The use of an improper extension cord could result in fire or electric shock.
- Never attempt to connect two chargers together.

WARNING: Do not allow water or any other liquid to come into contact with the charger as this may result in electric shock. Do not position the tool or battery charger near water. Take care not to spill liquid of any kind on the tool or charger.

- To reduce the risk of electric shock, unplug the charger from the power supply before attempting to clean it. To clean the tool or charger, wipe with a damp cloth. Use of any other cleaners is not recommended.
- Do not pull on the lead of the charger to disconnect it from the mains power socket.

ADDITIONAL SAFETY INFORMATION RELATED TO BATTERY SAFETY

- Use only the battery supplied with this tool or DOMU Brands approved replacements.
- Do not use the battery to power any device other than the tool it was sold with.
- Charge the battery only with the charger supplied with the tool or approved replacements and according to the instructions in this manual.
- Do not charge the battery in a place where static electricity is generated, or let the battery touch anything that is statically charged.
- Handle batteries with care to avoid shorting the battery with conducting materials such as nails, screws, metal watches, hands, rings, bracelets and keys. The battery may overheat and could cause burns.
- Never attempt to open the battery, puncture the battery, or subject the battery to strong physical shock. Stop using the product if it exhibits abnormal heat, odour, colour, deformation, or is in an abnormal condition. If you detect leakage or a foul odour, it is especially important to keep the battery away from fire. If battery liquid leaks onto your skin or clothes, wash well with clean water immediately. If liquid leaking from the battery leaks into your eyes, do not rub your eyes; rinse eyes well (for at least 10 minutes) with clean water, and consult a doctor immediately. Never use a leaking battery.
- Always allow the battery to cool down after charging. Do not leave in a hot environment.
- Take care where the tool is stored. Do not store in areas of corrosive fumes, or salt air or similar conditions. Try to store the tool in the packaging it is supplied in.

WARNING: Never store or leave your Lithium-ion battery in temperatures over that recommended as this may

SAFETY INFORMATION

- Store idle power tools out of the reach of children and do not allow persons unfamiliar with the power tool or these instructions to operate the tool.
- Power tools are dangerous in the hands of untrained users. Maintain power tools. Check for misalignment or binding of moving parts, breakage of parts and any other condition that may affect the power tool's operation. If damaged, have the power tool repaired before use.
- During the slotting operation, keep the machine straight and advance uniformly.
- Wear insulated gloves and shoes, when using the water cutting operation to avoid electric shock.
- Draw the guide wire on the work surface to improve efficiency and accuracy of slotting.
- This machine is high-powered with a heavier work load, ensure that the onter-connecting components are solid and reliable before using the Wall Climber.
- Waterless cutting operations should be equipped with dust removal equipment.
- When turning the machine, you should open the cover while paying special attention to the protection of flying sand. Slotting work without protection is very dangerous. In serious cases, it will cause personal injury.
- When using a pump to groove on the wall, work from top to bottom. Be careful not to let water flow into the machine.

SAVE THESE WARNINGS.

SPECIFICATIONS



TECHNICAL SPECIFICATIONS

Model No:92030

Rated Voltage:110V

Rated Frequency:60Hz

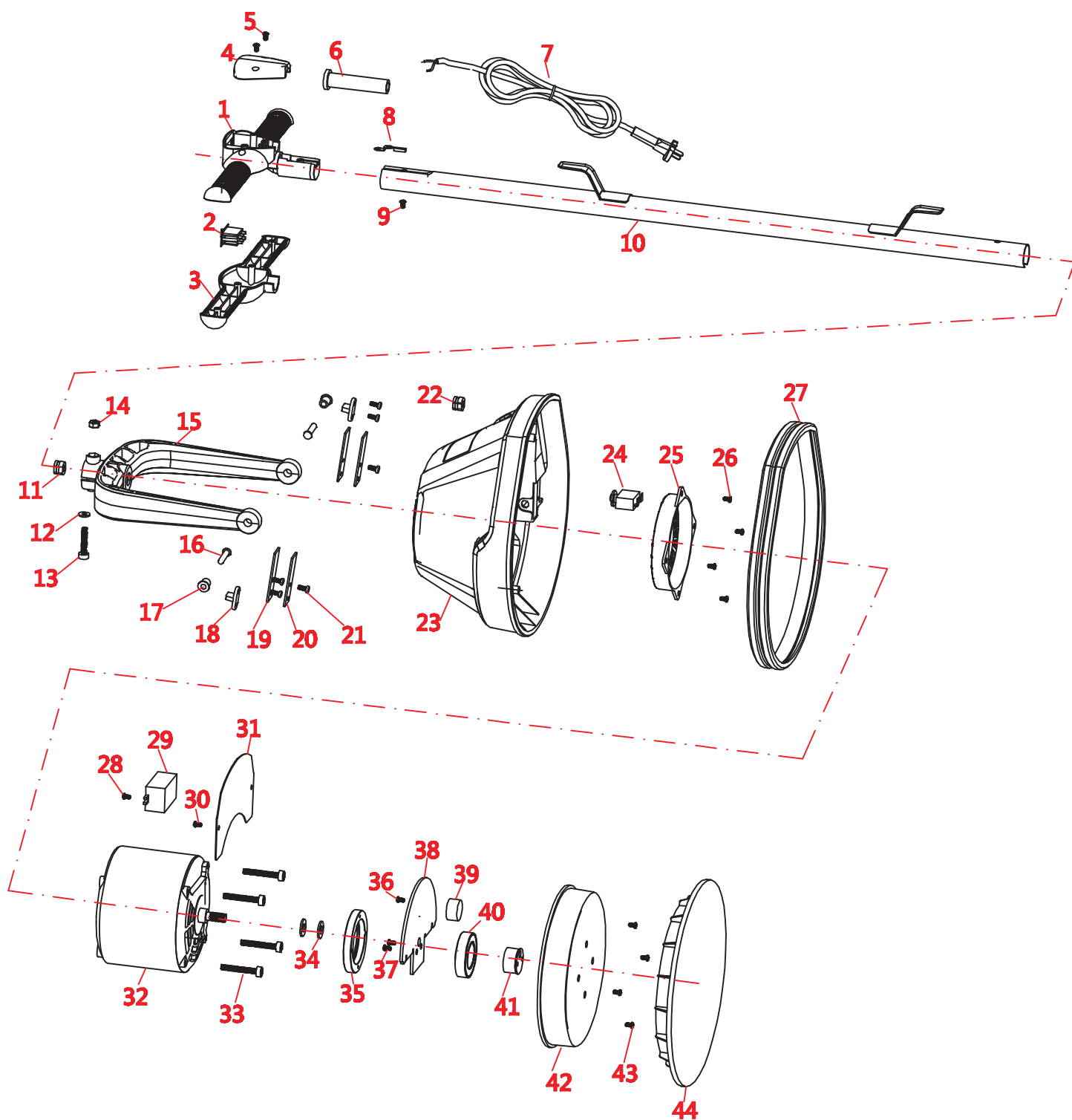
Power:380W

No Load Speed:1800RPM

Grinding Pad Diameter:10 INCH

weight:40LBS

PARTS EXPLODED VIEW



PARTS LIST

Parts No.	Name	QTY	Parts No.	Name	QTY
1	Front Handle-1	1	23	Box	1
2	Switch	1	24	Overload Switch	1
3	Front Handle-2	1	25	Dust Cap	1
4	Switch Cover	1	26	M4 Screw	4
5	M4 Screw	1	27	Bumper Strip	1
6	Bushing	1	28	M5 Screw	2
7	Power Cord	1	29	Overload Protector	1
8	Ground Connector	1	30	M5 Screw	2
9	M4 Screw	1	31	Cover Plate	1
10	Long Pole	1	32	Motor	1
11	Wire Clip	2	33	M5 Screw Pole	4
12	Gasket	1	34	Gasket	1
13	M6 Screw Pole	1	35	Bearing Housing	1
14	M6 Screw Nut	1	36	M5 Flat Screw	1
15	U-shaped movable frame	1	37	M5 Flat Screw	2
16	Spin Axis	2	38	Eccentric Block	1
17	Nylon Cover	2	39	Balancing Weight	1
18	Holder Block	2	40	Bearing 6006	1
19	EVA sheet	2	41	Bearing inner stay block	1
20	Spring steel sheet	2	42	Plastic Plate	1
21	M4 Screw	6	43	M4 Screw	4
22	Wire Clip	1	44	Plastic tray cover	1

DISCLAIMER

PLEASE READ THE FOLLOWING CAREFULLY

THE MANUFACTURER AND/OR DISTRIBUTOR HAS PROVIDED THE PARTS LIST AND ASSEMBLY DIAGRAM IN THIS MANUAL AS A REFERENCE TOOL ONLY. NEITHER THE MANUFACTURER OR DISTRIBUTOR MAKES ANY REPRESENTATION OR WARRANTY OF ANY KIND TO THE BUYER THAT HE OR SHE IS QUALIFIED TO MAKE ANY REPAIRS TO THE PRODUCT, OR THAT HE OR SHE IS QUALIFIED TO REPLACE ANY PARTS OF THE PRODUCT. IN FACT, THE MANUFACTURER AND/OR DISTRIBUTOR EXPRESSLY STATES THAT ALL REPAIRS AND PARTS REPLACEMENTS SHOULD BE UNDERTAKEN BY CERTIFIED AND LICENSED TECHNICIANS, AND NOT BY THE BUYER. THE BUYER ASSUMES ALL RISK AND LIABILITY ARISING OUT OF HIS OR HER REPAIRS TO THE ORIGINAL PRODUCT OR REPLACEMENT PARTS THERETO, OR ARISING OUT OF HIS OR HER INSTALLATION OF REPLACEMENT PARTS THERETO.

Record Product's Serial Number Here: _____

Note: If product has no serial number, record month and year of purchase instead.

Note: Some parts are listed and shown for illustration purposes only and are not available individually as replacement parts.

Questions, issues or missing parts?

Before returning to your retailer, our customer service team is here to help.



Call Us: 909.628.0880

Email Us: customer@xtremepowerusa.com

Hours of Operation: 9am - 3pm PST Monday - Friday

MADE IN CHINA