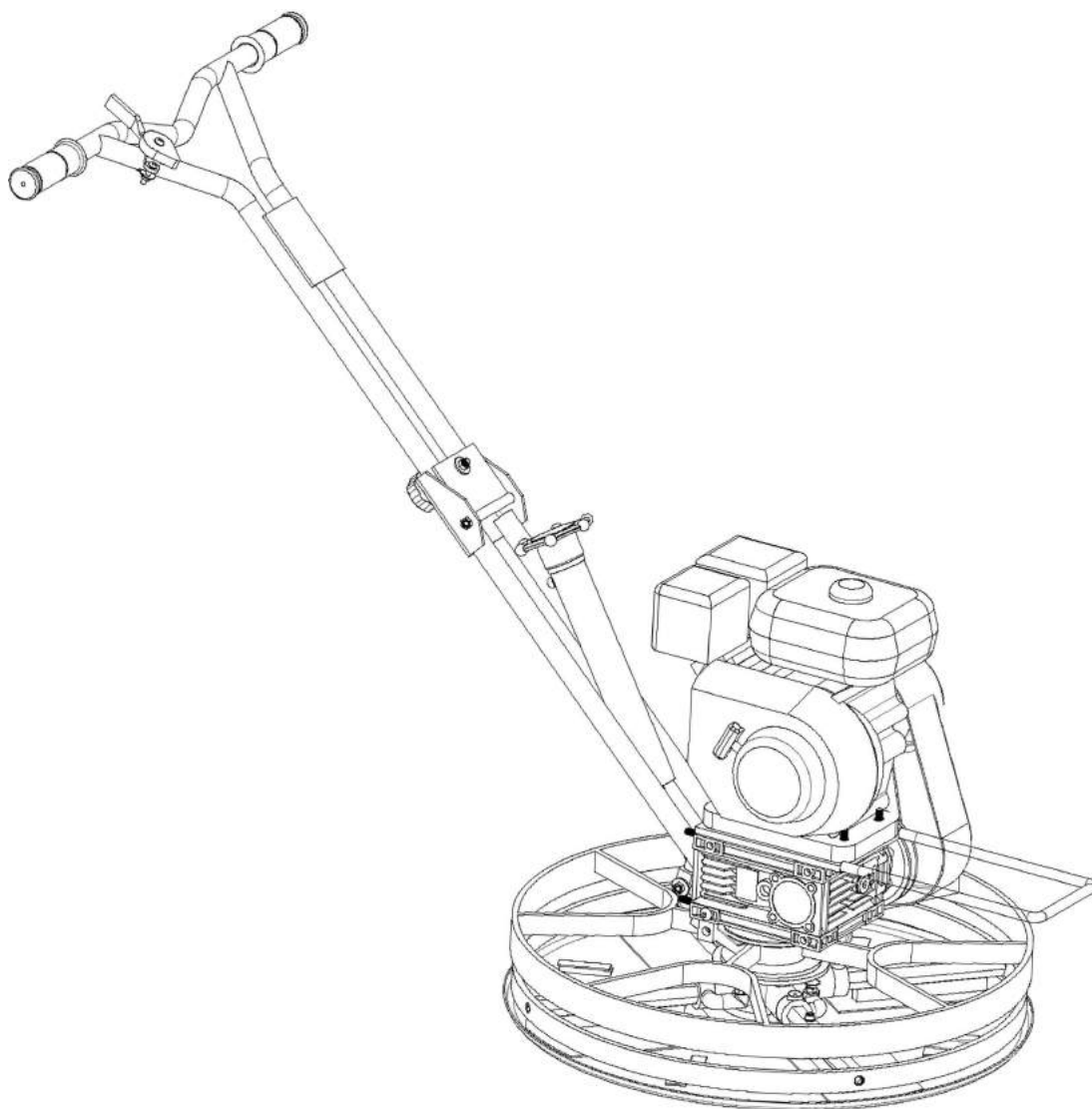




POWER TROWEL W. HOOK DISC PAN

ITEM # 61041 (LONCIN 200F ENGINE), 61042 (GX160 ENGINE)



OWNER'S MANUAL AND SAFETY INSTRUCTIONS

SAVE THIS MANUAL. KEEP THIS MANUAL FOR SAFETY WARNINGS, PRECAUTIONS, ASSEMBLY, OPERATION, INSPECTION, MAINTENANCE AND CLEANING PROCEDURES. WRITE THE PRODUCT'S SERIAL NUMBER ON THE BACK OF THE MANUAL, OR THE MONTH AND YEAR OF PURCHASE IF PRODUCT HAS NO SERIAL NUMBER

FOR QUESTIONS, PLEASE CALL CUSTOMER SERVICE: 909.628.4900



GENERAL SAFETY WARNINGS

Read all safety warnings and instructions. Failure to follow the warnings and instructions may result in electric shock, fire and/or serious injury. Save all warnings and instructions for future reference.

The warnings, precautions, and instructions discussed in this instruction manual cannot cover all possible conditions and situations that may occur. It must be understood by the operator that common sense and caution are factors which cannot be built into this product, but must be supplied by the operator. Read carefully and understand all **ASSEMBLY AND OPERATION INSTRUCTIONS** before operating. Failure to follow the safety rules and other basic safety precautions may result in serious personal injury.

Read and understand all instructions. Failure to follow all instructions may result in serious injury or property damage.

DO NOT allow persons to operate or assemble the product until they have read this manual and have developed a thorough understanding of how it works.

DO NOT modify this product in any way. Unauthorized modification may impair the function and/or safety and could affect the life of the product. There are specific applications for which the product was designed.

Use the right tool for the job. DO NOT attempt to force small equipment to do the work of larger industrial equipment. There are certain applications for which this equipment was designed. This product will be safer and do a better job at the capacity for which it was intended. **DO NOT** use this equipment for a purpose for which it was not intended.

Inspect the work area before each use. Keep work area clean, dry, free of clutter, and well-lit. Cluttered, wet, or dark work areas can result in injury.

NEVER operate the machine with the belt guard missing. Exposed drive belt and pulleys create potentially dangerous hazards that can cause serious injuries.

NEVER use the trowel around pop-ups in the concrete that are lower than the lowest ring on the ring guard.

Keep children and bystanders away from the work area while operating the tool. DO NOT allow children to handle the product.

ALWAYS close fuel valve on engines equipped with one when machine is not being operated.

ALWAYS operate machine with all safety devices and guards in place and in working order. **DO NOT** modify or defeat safety devices. **DO NOT** operate machine if any safety devices or guards are missing or inoperative.

Stay alert, watch what you are doing, and use common sense when operating the tool. **DO NOT** use the tool while you are tired or under the influence of drugs, alcohol, or medication.

IMPORTANT SAFETY INFORMATION

Dress properly. DO NOT wear loose clothing, dangling objects or jewelry. Keep your hair, clothing and gloves away from moving parts. Loose clothes, jewelry, or long hair can be caught in moving parts.

Wear the proper personal protective equipment when necessary. Use ANSI Z87.1 compliant safety goggles (not safety glasses) with side shields, or when needed, a face shield. Use a dust mask in dusty work conditions. Also use non-skid safety shoes, hard-hat, gloves, dust collection systems, and hearing protection when appropriate. This applies to all persons in the work area.

Always test the function of the engine control module before operating the trowel. **DO NOT** operate the trowel if the engine control module is not functioning properly.

DANGER: Internal combustion engines present special hazards during operation and fueling. Read and follow the warning instructions in the engine owner's manual and the safety guidelines below. Failure to follow the warnings and safety guidelines could result in severe injury or death.

Check for damaged parts before each use. Carefully check that the product will operate properly and perform its intended function. Replace damaged or worn parts immediately. Never operate the product with a damaged part.

DO NOT run the machine indoors or in an enclosed area such as a deep trench unless adequate ventilation, through such items as exhaust fans or hoses, is provided. Exhaust gas from the engine contains poisonous carbon monoxide gas; exposure to carbon monoxide can cause loss of consciousness and may lead to death.

WARNING: Poorly maintained equipment can become a safety hazard! In order for the equipment to operate safely and properly over a long period of time, periodic maintenance and occasional repairs are necessary.

DO NOT attempt to clean or service the machine while it is running. Rotating parts can cause severe injury.

DO NOT crank a flooded engine with the spark plug removed on gasoline-powered engines. Fuel trapped in the cylinder will squirt out the spark plug opening.

DO NOT test for spark on gasoline-powered engines if the engine is flooded or the smell of gasoline is present. A stray spark could ignite the fumes.

DO NOT use gasoline or other types of fuels or flammable solvents to clean parts, especially in enclosed areas. Fumes from fuels and solvents can become explosive.

ALWAYS disconnect the spark plug on machines equipped with gasoline engines, before servicing, to avoid accidental start-up.

ALWAYS keep the machine clean and labels legible. Replace all missing and hard-to-read labels. Labels provide important operating instructions and warn of dangers and hazards.

ALWAYS handle blades carefully. The blades can develop sharp edges which can cause serious cuts.

PARTS INFORMATION

Part # 1



1

Part # 2



2

Part # 3



3

Part # 4



4

Part # 5



5

Part # 6



6

Part # 7



7

Part # 8



8

Part # 9



9

Part # 10



10

Part # 11



11

Part # 12



12

Part # 13



13

Part # 14



14

Part # 15



15

Part # 16



16

PARTS INFORMATION

Code	Name	Type	Qty	Note
1	Flat gasket	6*18*2	4pcs	
	Hexagon screw	M6*12	4pcs	
2	Countersunk head hexagon screw	5/16-24-16/20	2pcs each	If with Honda engine (for sku: 61042-1)
		M8*16/20	2pcs each	If with Loncin engine (for sku: 61041-1)
3	Shaft head bolt	5/16-24-38	1pc	
	Spring gasket	Ø8	1pc	
	Tapered flat gasket	8*30	1pc	
	Flat key	4.78*50	1pc	
	Clutch adjusting pad	Ø20*8	1pcs	
4	Double end bolt	M8*40	4pcs	
	Flange nut	M8	4pcs	
5	Outer hexagon bolt	M8*35	1pc	
	Locknut	M8	1pc	
	Flat gasket	Ø8	2pcs	
6	Ribbon		4pcs	
7	Belt cover bracket assembly	Z plate and connecting plate	2pcs	
		M6*16Countersunk head screw	2pcs	
		M6 flange nut	2pcs	
8	Clutch assembly	19.05	1set	
9	Lifting hook		1pc	
10	Belt cover		1pc	
11	Disc pan		1pc	
12	V belt	A-584	1pc	
13	Lower handle		1set	Including lifting screw,upper handle retaining bolt M8*120(1pc) and M8*50 bakelite bolt etc.
14	Upper handle		1set	
15	Main body		1set	
16	Engine		1set	Including throttle lever assembly

ASSEMBLY

STEP 1



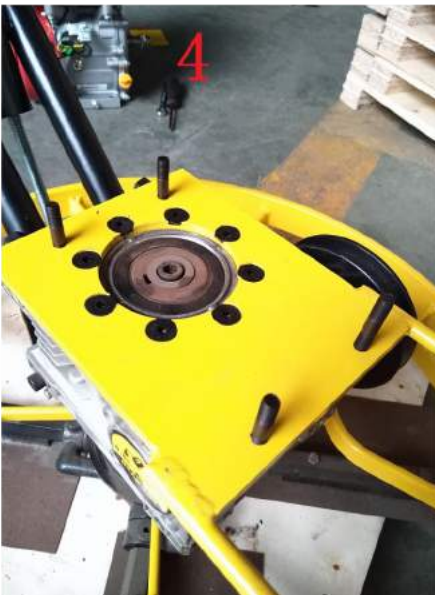
STEP 2



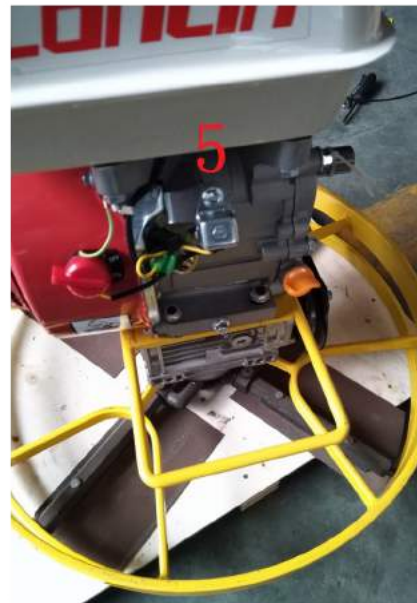
STEP 3



STEP 4



STEP 5



STEP 6



STEP 7



STEP 8



STEP 9



ASSEMBLY

STEP 10



STEP 11



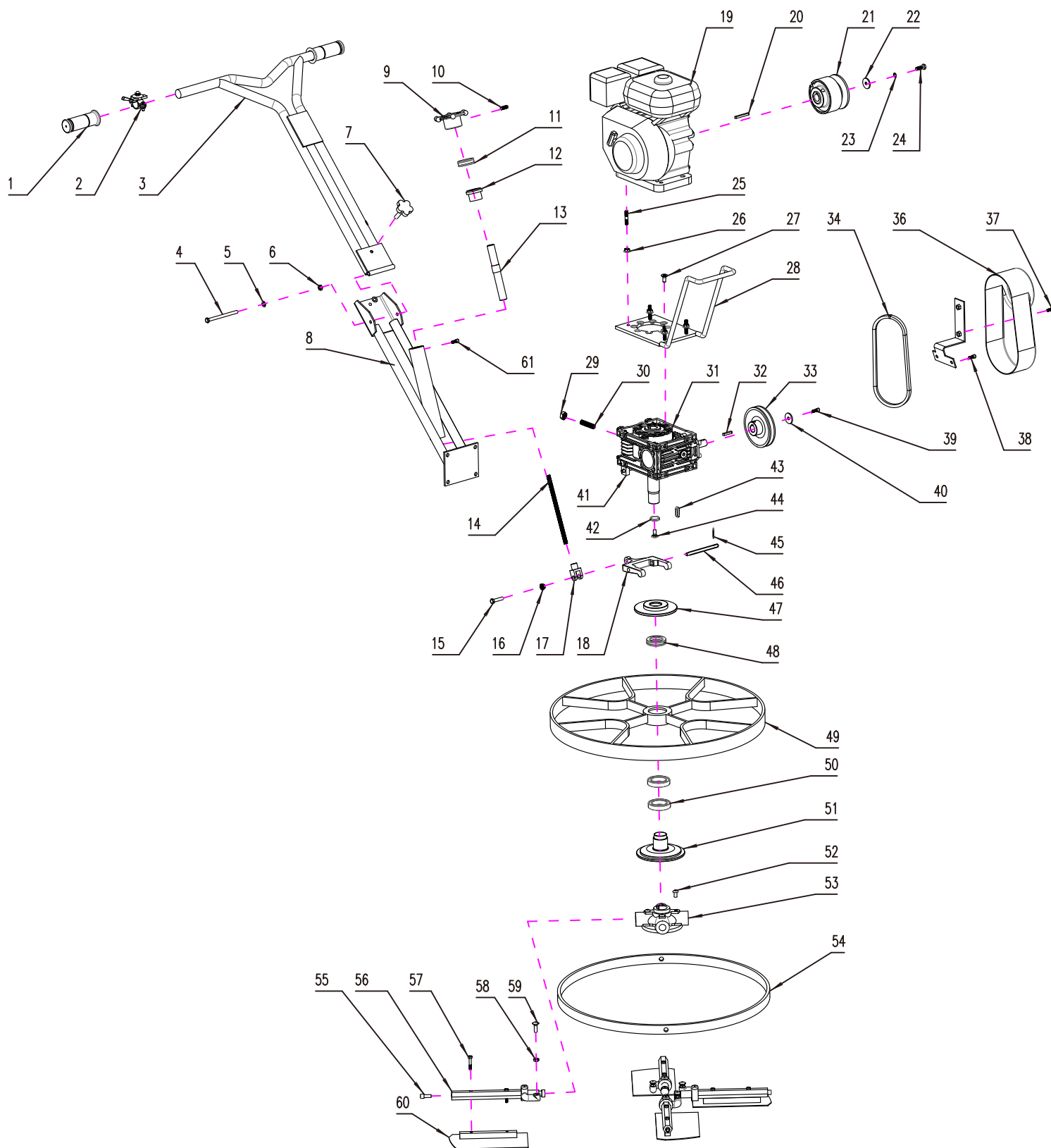
STEP 12



STEP 13



1. Use M10 nut, spring gasket and flat gasket to fix No.13 on the No.15.(nut and flat spring gasket are on the No.15 already).
2. Use No.5 to lock U-shaped part on the No.15(U-shaped part is on No.13 already).
3. Use M8x120 out hexagon bolt and nut to connect No.14 and No.13.Use M8x50 bakelite bolt to lock it.(M8x120 bolt,nut and M8x50 bakelite bolt are all with No.13)
4. Twist No.4 double end bolt on the No.15.
5. Put No.16 engine on the engine support plate(No.15).Use No.4 flange nut to fix it.
6. Use No.2 bolt which is 20mm length to fix No.9 and No.7 on the engine side cover by locking two nether holes.Use No.2 bolt which is 16mm length to fix No.9 on the engine side cover by locking two upper holes.
7. Put No.3 clutch adjusting pad on the engine shaft to adjust the gap.Put No.3 flat key into the engine shaft groove.(Notice:put the key into the head of the shaft,then go into the groove with clutch.See Step 8)
8. Put No.8 clutch into the groove.Use No.3 shaft head bolt,spring gasket and tapered flat gasket to fix it.
9. Use No.7 M6*16 countersunk head screw and M6 flange nut to fix connecting plate on the Z plate.
10. Install No.12 onto the pulley belt groove.
11. Use No.1 to fix No.10 belt cover on No.7.
12. Fix the throttle lever assy(including in No.16) on the handle.
13. Use No.6 to strap the throttle lever assy on the handle.



61041 Exploding Drawing

Part NO.	Description	Type	Qty
E-1	Plastic Handle		2pcs
E-2	Throttle Switch Assembly		1set
E-3	Control Handle		1pc
E-4	External Hexagon Bolt	M8*110	1pc
E-5	Flat Gasket	Ø8	2pcs
E-6	Locked Nut	M8	1pc
E-7	Bakelite Plum Flower Bolt	M8*50	1pc
E-8	Armrest		1pc
E-9	Aluminum Lift Handle		1pc
E-10	Locked Bolt	M8*12	1pc
E-11	Plane Bearing	51204	1pc
E-12	Aluminum Fixing Sleeve		1pc
E-13	Lift Screw		1pc
E-14	Lifting rod connector	M10	1pc
E-15	External Hexagon Bolt	M8*35	1pc
E-16	Locked Nut	M8	1pc
E-17	Lifting rod connector		1pc
E-18	Shift Lever		1pc
E-19	Engine		1set
E-20	Key	5*40	1pc
E-21	Clutch Assembly		1set
E-22	Enlarged Flat Gasket	8*30	1pc
E-23	Spring Gasket	Ø8	1pc
E-24	External Hexagon Bolt	M8*40	1pc
E-25	Bolt	M8*40	4pcs
E-26	Flange Nut	M8	4pcs
E-27	Inner Hexagon Bolt	M8*20	8pcs
E-28	Supporting Seat		1pc
E-29	Locked Nut	M10	4pcs
E-30	Locked Bolt	M10*40	4pcs
E-31	Worm-Gear Case		1set
E-32	Key	6*30	1pc
E-33	Pulley		1pc
E-34	Belt		1pc
E-35	Belt Cover Bracket		1pc
E-36	Belt Cover		1pc
E-37	Inner Hexagon Bolt	M8*16	2pcs
E-38	Round Head Bolt	M8*16	2pcs
E-39	Inner Hexagon Bolt	M6*20	1pc
E-40	Enlarged Flat Gasket	6*24	1pc
E-41	Shift Fork of Support Block		2pcs
E-42	Gasket		1pc
E-43	Key	M8*25	1pc
E-44	Countersunk Head Bolt	M8*30	1pc
E-45	Cotter	Ø3	2pcs
E-46	Shift Fork of Pin		1pc
E-47	Shift Fork Disc		1pc
E-48	Plane Bearing	51107	1pc
E-49	Shield		1pc
E-50	Bearing	6908	2pcs
E-51	Shield Shaft Seat		1pc
E-52	Countersunk Head Bolt	M8*20	4pcs
E-53	Cross Shaft		1pc
E-54	Blade Retainer		1pc
E-55	Inner Hexagon Bolt	M8*20	1pc
E-56	Blade Shaft Assembly		4sets
E-57	External Hexagon Bolt	M6*35	8pcs
E-58	Nut	M8	4pcs
E-59	Step Bolt	M8*30	4pcs
E-60	Blade		4pcs
E-61	Inner Hexagon Bolt	M8*10	1pc

DISCLAIMER

PLEASE READ THE FOLLOWING CAREFULLY

THE MANUFACTURER AND/OR DISTRIBUTOR HAS PROVIDED THE PARTS LIST AND ASSEMBLY DIAGRAM IN THIS MANUAL AS A REFERENCE TOOL ONLY. NEITHER THE MANUFACTURER OR DISTRIBUTOR MAKES ANY REPRESENTATION OR WARRANTY OF ANY KIND TO THE BUYER THAT HE OR SHE IS QUALIFIED TO MAKE ANY REPAIRS TO THE PRODUCT, OR THAT HE OR SHE IS QUALIFIED TO REPLACE ANY PARTS OF THE PRODUCT. IN FACT, THE MANUFACTURER AND/OR DISTRIBUTOR EXPRESSLY STATES THAT ALL REPAIRS AND PARTS REPLACEMENTS SHOULD BE UNDERTAKEN BY CERTIFIED AND LICENSED TECHNICIANS, AND NOT BY THE BUYER. THE BUYER ASSUMES ALL RISK AND LIABILITY ARISING OUT OF HIS OR HER REPAIRS TO THE ORIGINAL PRODUCT OR REPLACEMENT PARTS THERETO, OR ARISING OUT OF HIS OR HER INSTALLATION OF REPLACEMENT PARTS THERETO.

Record Product's Serial Number Here: _____

Note: If product has no serial number, record month and year of purchase instead.

Note: Some parts are listed and shown for illustration purposes only and are not available individually as replacement parts.

The material in this manual is for informational purposes only. The product(s) it describes are subject to change without prior notice, due to the manufacturer's continuous development program. Stark Tools makes no representations or warranties with respect to this manual or with respect to the products described herein. Stark Tools shall not be liable for any damages, losses, costs or expenses, direct, indirect or incidental, consequential or special, arising out of, or related to the use of this material or the products described herein.

Questions, issues or missing parts?

Before returning to your retailer, our customer service team is here to help.



Call Us: 909.628.4900

Email Us: info@starktoolsusa.com

Hours of Operation: 9am - 3pm PST Monday - Friday